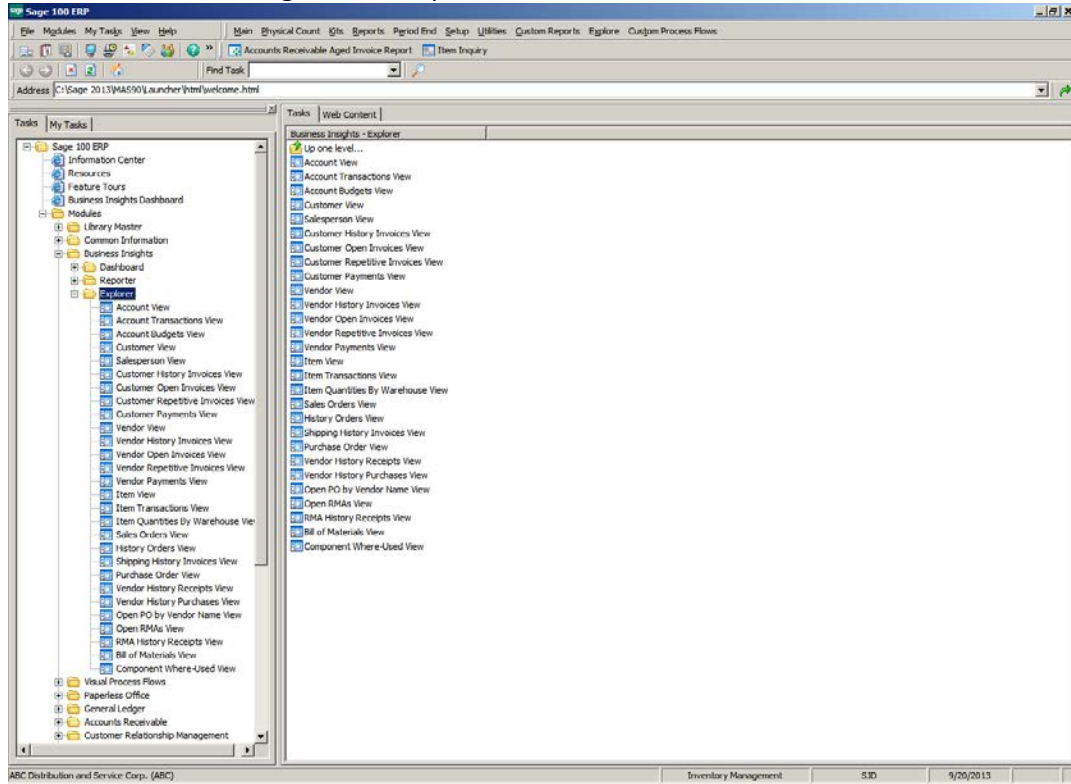
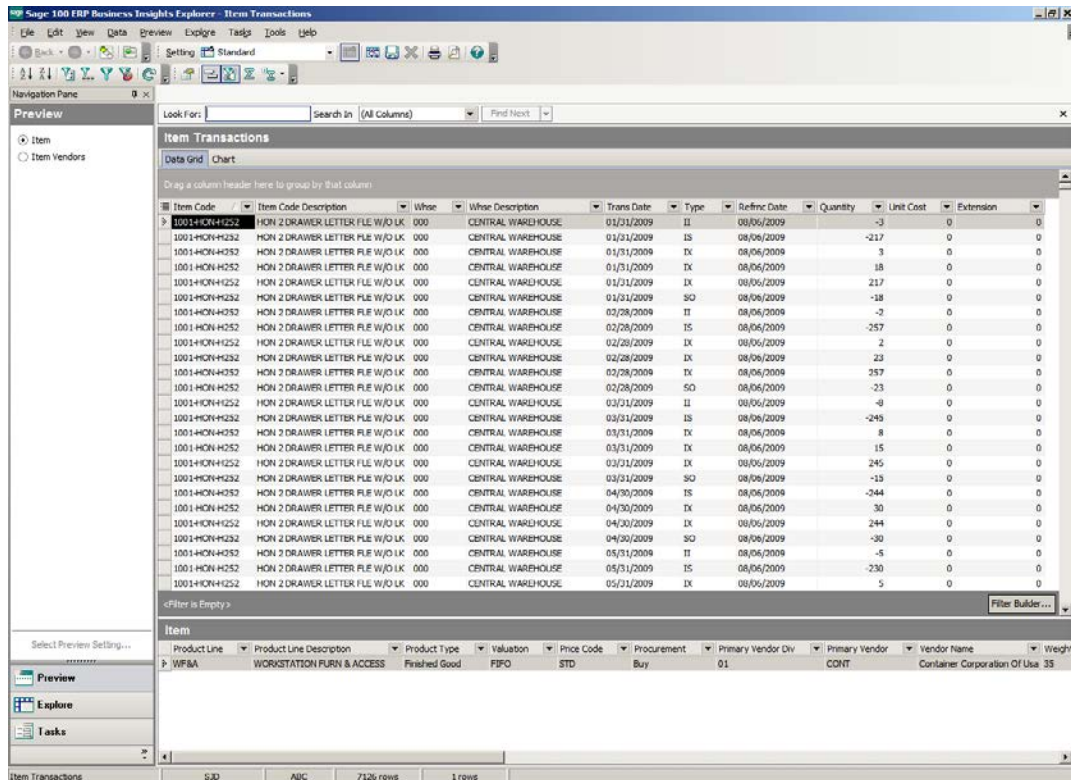


# Business Insights Explorer – Item Sales History by Customer

Click on Business Insights, the Explorer.

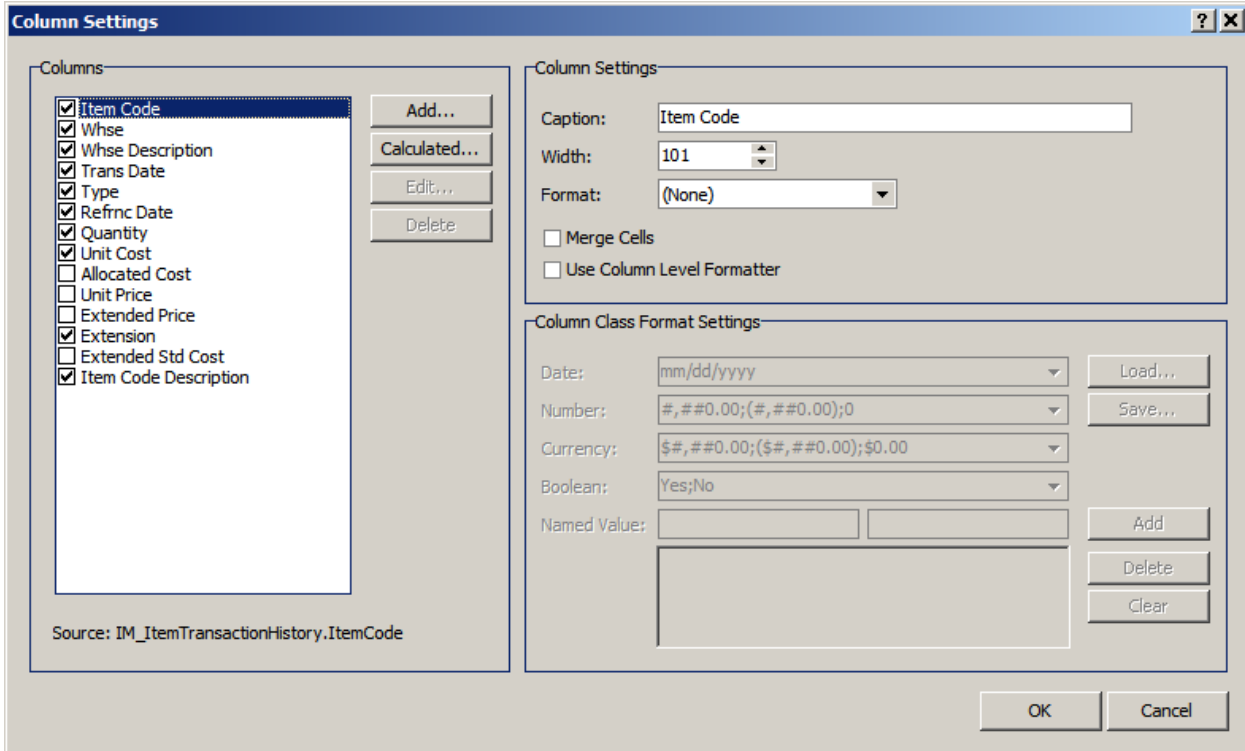


Click on Item Transaction View.

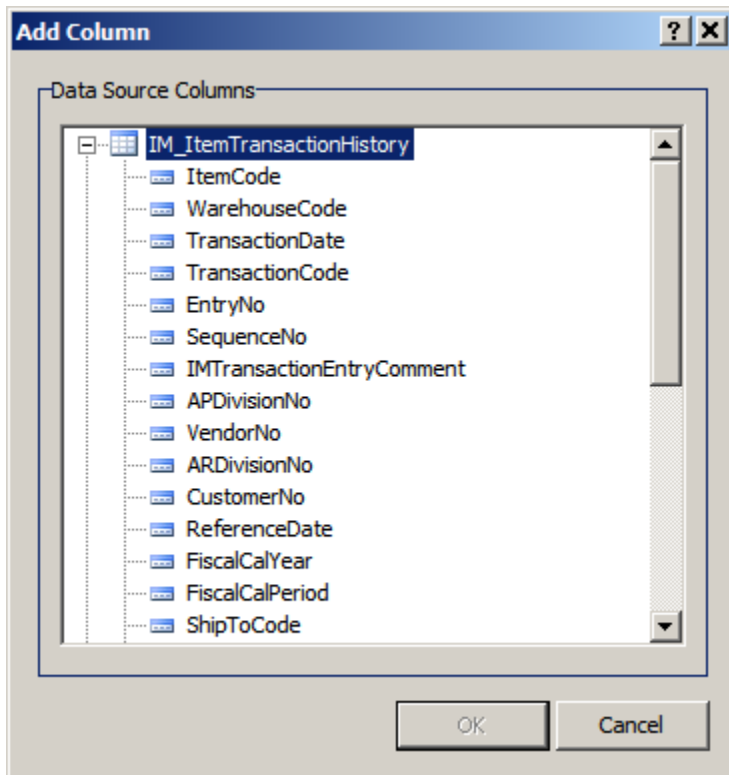


**Columns:**

To add additional columns, click on the Visible column tool in the left hand corner or Right Click on the column header. Click on Column Settings, select your additional columns and deselect columns you don't want to see. Click unit price, extended price. Remove Unit Cost, Extension, Refrnc Date and Warehouse Description.



Click the Add button to add additional columns that are not showing by default. Add AR Division, AR Customer No and FiscalCalYear.



Sage 100 ERP Business Insights Explorer - Item Transactions

Navigation Pane: Item (selected), Item Vendors

Look For: Search In (All Columns) Find Next

Item Transactions

Drag a column header here to group by that column

Whse	Whse Description	Trans Date	Type	Refrcn Date	Quantity	Unit Price	Extended Price	AR Division	Customer Number	Fiscal Year
CENTRAL WAREHOUSE		01/31/2009	II	08/06/2009	-3	0	0			2009
CENTRAL WAREHOUSE		01/31/2009	IS	08/06/2009	-217	0	0			2009
CENTRAL WAREHOUSE		01/31/2009	IX	08/06/2009	3	0	0			2009
CENTRAL WAREHOUSE		01/31/2009	IX	08/06/2009	18	0	0	01	ABF	2009
CENTRAL WAREHOUSE		01/31/2009	IX	08/06/2009	217	0	0			2009
CENTRAL WAREHOUSE		01/31/2009	SO	08/06/2009	-18	0	0	01	ABF	2009
CENTRAL WAREHOUSE		02/28/2009	II	08/06/2009	-2	0	0			2009
CENTRAL WAREHOUSE		02/28/2009	IS	08/06/2009	-257	0	0			2009
CENTRAL WAREHOUSE		02/28/2009	IX	08/06/2009	2	0	0			2009
CENTRAL WAREHOUSE		02/28/2009	IX	08/06/2009	23	0	0	01	ABF	2009
CENTRAL WAREHOUSE		02/28/2009	IX	08/06/2009	257	0	0			2009
CENTRAL WAREHOUSE		02/28/2009	SO	08/06/2009	-23	0	0	01	ABF	2009
CENTRAL WAREHOUSE		03/31/2009	II	08/06/2009	-8	0	0			2009
CENTRAL WAREHOUSE		03/31/2009	IS	08/06/2009	-245	0	0			2009
CENTRAL WAREHOUSE		03/31/2009	IX	08/06/2009	8	0	0			2009
CENTRAL WAREHOUSE		03/31/2009	IX	08/06/2009	15	0	0	01	ABF	2009
CENTRAL WAREHOUSE		03/31/2009	IX	08/06/2009	245	0	0			2009
CENTRAL WAREHOUSE		03/31/2009	SO	08/06/2009	-15	0	0	01	ABF	2009
CENTRAL WAREHOUSE		04/30/2009	IS	08/06/2009	-244	0	0			2009
CENTRAL WAREHOUSE		04/30/2009	IX	08/06/2009	30	0	0	01	ABF	2009
CENTRAL WAREHOUSE		04/30/2009	IX	08/06/2009	244	0	0			2009
CENTRAL WAREHOUSE		04/30/2009	SO	08/06/2009	-30	0	0	01	ABF	2009
CENTRAL WAREHOUSE		05/31/2009	II	08/06/2009	-5	0	0			2009
CENTRAL WAREHOUSE		05/31/2009	IS	08/06/2009	-230	0	0			2009

Item

Product Line	Product Line Description	Product Type	Valuation	Price Code	Procurement	Primary Vendor Div	Primary Vendor	Vendor Name	Weight
WF&A	WORKSTATION FURN & ACCESS	Finished Good	FIFO	STD	Buy	01	CONT	Container Corporation Of Usa	35

Item Transactions SID ABC 7126 rows 1 rows

Move columns to desired location by dragging them.

Sage 100 ERP Business Insights Explorer - Item Transactions

Navigation Pane: Item (selected), Item Vendors

Look For: Search In (All Columns) Find Next

Item Transactions

Drag a column header here to group by that column

Whse	Whse Description	Trans Date	Fiscal Year	AR Divis	Customer Number	Type	Refrcn Date	Quantity	Unit Price	Extended Price
000	CENTRAL WAREHOUSE	01/31/2009	2009			II	08/06/2009	-3	0	0
000	CENTRAL WAREHOUSE	01/31/2009	2009			IS	08/06/2009	-217	0	0
000	CENTRAL WAREHOUSE	01/31/2009	2009			IX	08/06/2009	3	0	0
000	CENTRAL WAREHOUSE	01/31/2009	2009	01	ABF	IX	08/06/2009	18	0	0
000	CENTRAL WAREHOUSE	01/31/2009	2009			IX	08/06/2009	217	0	0
000	CENTRAL WAREHOUSE	01/31/2009	2009	01	ABF	SO	08/06/2009	-18	0	0
000	CENTRAL WAREHOUSE	02/28/2009	2009			II	08/06/2009	-2	0	0
000	CENTRAL WAREHOUSE	02/28/2009	2009			IS	08/06/2009	-257	0	0
000	CENTRAL WAREHOUSE	02/28/2009	2009			IX	08/06/2009	2	0	0
000	CENTRAL WAREHOUSE	02/28/2009	2009	01	ABF	IX	08/06/2009	23	0	0
000	CENTRAL WAREHOUSE	02/28/2009	2009			IX	08/06/2009	257	0	0
000	CENTRAL WAREHOUSE	02/28/2009	2009	01	ABF	SO	08/06/2009	-23	0	0
000	CENTRAL WAREHOUSE	03/31/2009	2009			II	08/06/2009	-8	0	0
000	CENTRAL WAREHOUSE	03/31/2009	2009			IS	08/06/2009	-245	0	0
000	CENTRAL WAREHOUSE	03/31/2009	2009			IX	08/06/2009	8	0	0
000	CENTRAL WAREHOUSE	03/31/2009	2009	01	ABF	IX	08/06/2009	15	0	0
000	CENTRAL WAREHOUSE	03/31/2009	2009			IX	08/06/2009	245	0	0
000	CENTRAL WAREHOUSE	03/31/2009	2009	01	ABF	SO	08/06/2009	-15	0	0
000	CENTRAL WAREHOUSE	04/30/2009	2009			IS	08/06/2009	-244	0	0
000	CENTRAL WAREHOUSE	04/30/2009	2009	01	ABF	IX	08/06/2009	30	0	0
000	CENTRAL WAREHOUSE	04/30/2009	2009			IX	08/06/2009	244	0	0
000	CENTRAL WAREHOUSE	04/30/2009	2009	01	ABF	SO	08/06/2009	-30	0	0
000	CENTRAL WAREHOUSE	05/31/2009	2009			II	08/06/2009	-5	0	0
000	CENTRAL WAREHOUSE	05/31/2009	2009			IS	08/06/2009	-230	0	0

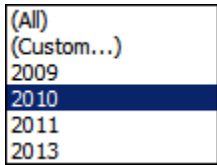
Item

Product Line	Product Line Description	Product Type	Valuation	Price Code	Procurement	Primary Vendor Div	Primary Vendor	Vendor Name	Weight
WF&A	WORKSTATION FURN & ACCESS	Finished Good	FIFO	STD	Buy	01	CONT	Container Corporation Of Usa	35

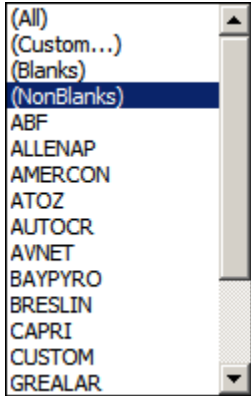
Item Transactions SID ABC 7126 rows 1 rows

**Filter:**

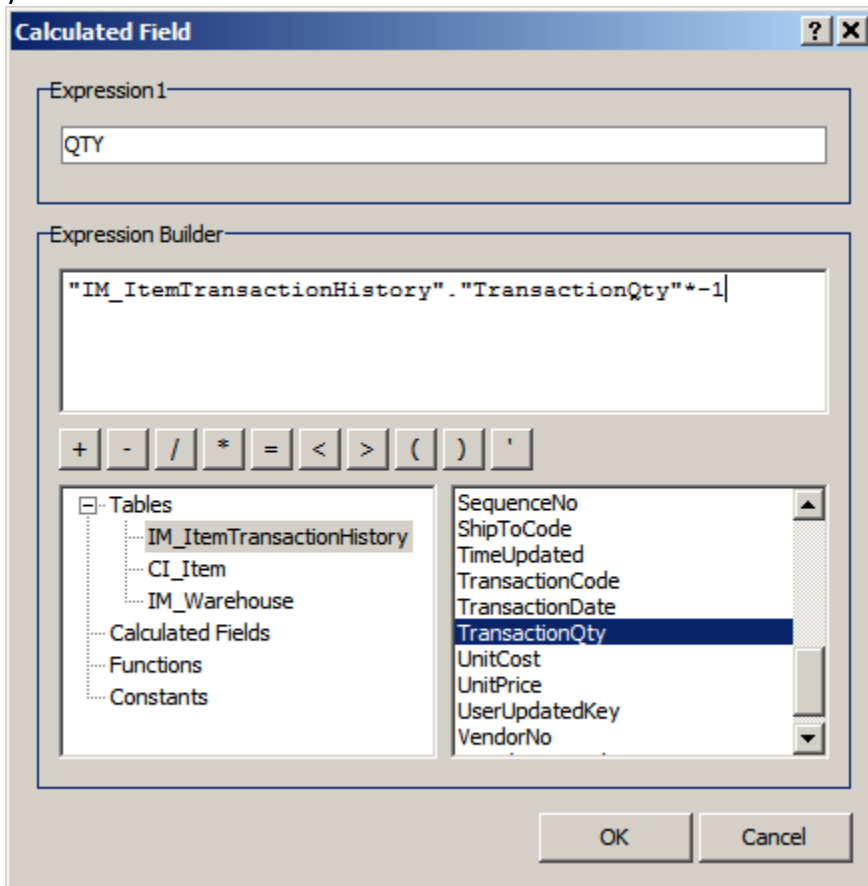
Click down arrow on Column that you would like to filter, such as Fiscal Year.

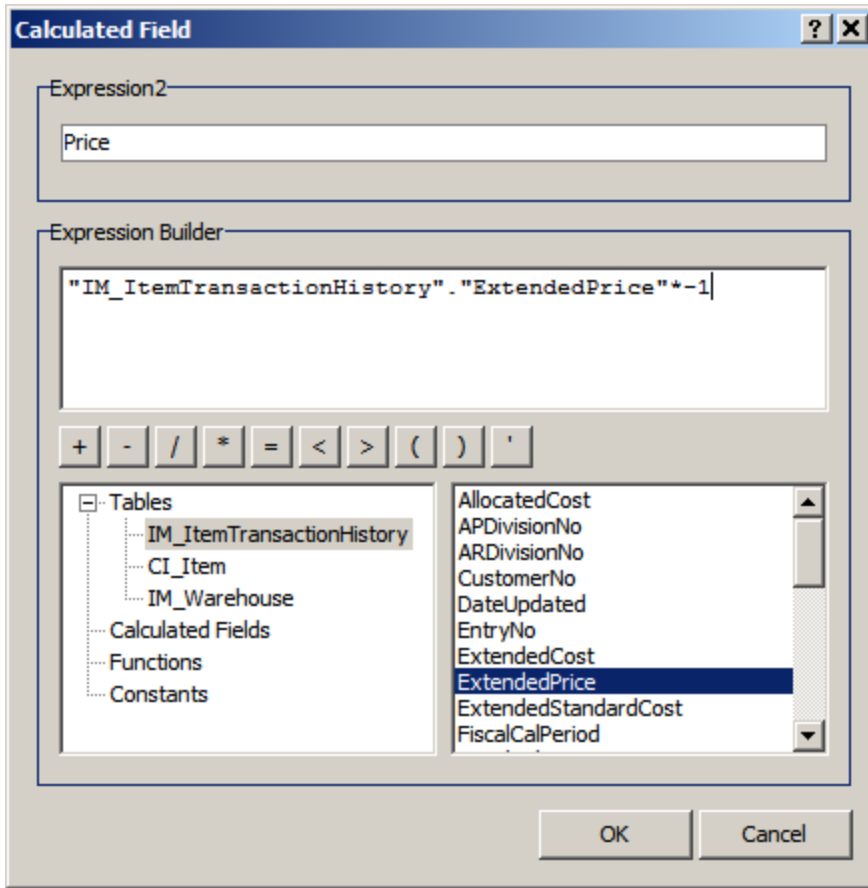


Click down arrow on Type, choose SO. Click down arrow on Customer Number, choose Non-Blanks.

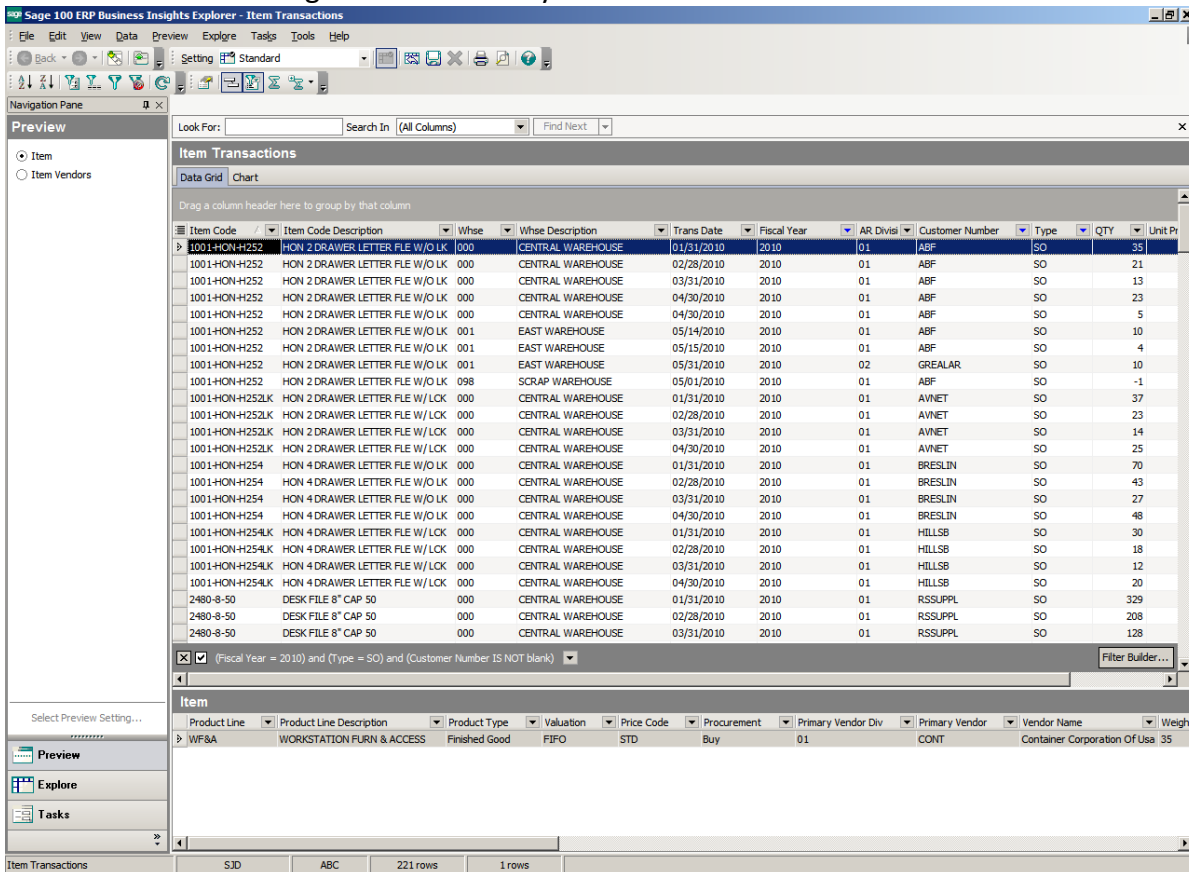


**Note:** Quantity and Extended Price are negative numbers. Add Calculated fields to get positive numbers. Right click on Column Header, choose Column Settings, then click Calculated Button. Create your new fields.





You can remove the negative fields from your screen.



## Grouping:

Drag the column you would like to Group (sort) by into the gray area. You can drag multiple columns into this area.

**Sage 100 ERP Business Insights Explorer - Item Transactions**

Look For: Search In (All Columns) Find Next

**Item Transactions**

Data Grid Chart

Item Code / Customer Number /

Item Code	Item Code Description	Whse	Whse Description	Trans Date	Fiscal Year	AR Divisi	Customer Number	Type	QTY
Item Code : 1001-HON-H252 (2 Items)									
Customer Number : ABF (8 Items)									
1001-HON-H252	HON 2 DRAWER LETTER FLE W/O LK	000	CENTRAL WAREHOUSE	01/31/2010	2010	01	ABF	SO	35
1001-HON-H252	HON 2 DRAWER LETTER FLE W/O LK	000	CENTRAL WAREHOUSE	02/28/2010	2010	01	ABF	SO	21
1001-HON-H252	HON 2 DRAWER LETTER FLE W/O LK	000	CENTRAL WAREHOUSE	03/31/2010	2010	01	ABF	SO	13
1001-HON-H252	HON 2 DRAWER LETTER FLE W/O LK	000	CENTRAL WAREHOUSE	04/30/2010	2010	01	ABF	SO	23
1001-HON-H252	HON 2 DRAWER LETTER FLE W/O LK	000	CENTRAL WAREHOUSE	04/30/2010	2010	01	ABF	SO	5
1001-HON-H252	HON 2 DRAWER LETTER FLE W/O LK	001	EAST WAREHOUSE	05/14/2010	2010	01	ABF	SO	10
1001-HON-H252	HON 2 DRAWER LETTER FLE W/O LK	001	EAST WAREHOUSE	05/15/2010	2010	01	ABF	SO	4
1001-HON-H252	HON 2 DRAWER LETTER FLE W/O LK	098	SCRAP WAREHOUSE	05/01/2010	2010	01	ABF	SO	-1
Customer Number : GREALAR (1 Item)									
1001-HON-H252	HON 2 DRAWER LETTER FLE W/O LK	001	EAST WAREHOUSE	05/31/2010	2010	02	GREALAR	SO	10
Item Code : 1001-HON-H252LK (1 Item)									
Customer Number : AVNET (4 Items)									
1001-HON-H252LK	HON 2 DRAWER LETTER FLE W/LCK	000	CENTRAL WAREHOUSE	01/31/2010	2010	01	AVNET	SO	37
1001-HON-H252LK	HON 2 DRAWER LETTER FLE W/LCK	000	CENTRAL WAREHOUSE	02/28/2010	2010	01	AVNET	SO	23
1001-HON-H252LK	HON 2 DRAWER LETTER FLE W/LCK	000	CENTRAL WAREHOUSE	03/31/2010	2010	01	AVNET	SO	14
1001-HON-H252LK	HON 2 DRAWER LETTER FLE W/LCK	000	CENTRAL WAREHOUSE	04/30/2010	2010	01	AVNET	SO	25
Item Code : 1001-HON-H254 (1 Item)									
Customer Number : BRESLIN (4 Items)									
1001-HON-H254	HON 4 DRAWER LETTER FLE W/O LK	000	CENTRAL WAREHOUSE	01/31/2010	2010	01	BRESLIN	SO	70
1001-HON-H254	HON 4 DRAWER LETTER FLE W/O LK	000	CENTRAL WAREHOUSE	02/28/2010	2010	01	BRESLIN	SO	43
1001-HON-H254	HON 4 DRAWER LETTER FLE W/O LK	000	CENTRAL WAREHOUSE	03/31/2010	2010	01	BRESLIN	SO	27
1001-HON-H254	HON 4 DRAWER LETTER FLE W/O LK	000	CENTRAL WAREHOUSE	04/30/2010	2010	01	BRESLIN	SO	48

(Fiscal Year = 2010) and (Type = SO) and (Customer Number IS NOT blank) Filter Builder...

**Item**

Product Line	Product Line Description	Product Type	Valuation	Price Code	Procurement	Primary Vendor Div	Primary Vendor	Vendor Name	Weight
WF&A	WORKSTATION PURN & ACCESS	Finished Good	FIFO	STD	Buy	01	CONT	Container Corporation Of Usa	35

Item Transactions SJD ABC 221 rows 1 rows

**Subtotal:**

Click on the Group Summary Tool icon. Then right click in the Summary Column section of the columns you would like to total. Choose Sum.

Navigation Pane: Item, Item Vendors

Look For: Search In (All Columns) Find Next

Item Transactions

Item Code	Item Code Description	Whse	Whse Description	Trans Date	Fiscal Year	AR Divisi	Customer Number	Type	QTY
Customer Number : ABF (8 Items)									
1001-HON-H252	HON 2 DRAWER LETTER FLE W/O LK	000	CENTRAL WAREHOUSE	01/31/2010	2010	01	ABF	SO	35
1001-HON-H252	HON 2 DRAWER LETTER FLE W/O LK	000	CENTRAL WAREHOUSE	02/28/2010	2010	01	ABF	SO	21
1001-HON-H252	HON 2 DRAWER LETTER FLE W/O LK	000	CENTRAL WAREHOUSE	03/31/2010	2010	01	ABF	SO	13
1001-HON-H252	HON 2 DRAWER LETTER FLE W/O LK	000	CENTRAL WAREHOUSE	04/30/2010	2010	01	ABF	SO	23
1001-HON-H252	HON 2 DRAWER LETTER FLE W/O LK	000	CENTRAL WAREHOUSE	04/30/2010	2010	01	ABF	SO	5
1001-HON-H252	HON 2 DRAWER LETTER FLE W/O LK	001	EAST WAREHOUSE	05/14/2010	2010	01	ABF	SO	10
1001-HON-H252	HON 2 DRAWER LETTER FLE W/O LK	001	EAST WAREHOUSE	05/15/2010	2010	01	ABF	SO	4
1001-HON-H252	HON 2 DRAWER LETTER FLE W/O LK	098	SCRAP WAREHOUSE	05/01/2010	2010	01	ABF	SO	-1
Customer Number : GREALAR (1 Item)									
1001-HON-H252	HON 2 DRAWER LETTER FLE W/O LK	001	EAST WAREHOUSE	05/31/2010	2010	02	GREALAR	SO	10
Item Code : 1001-HON-H252LK (1 Item)									
Customer Number : AVNET (4 Items)									
1001-HON-H252LK	HON 2 DRAWER LETTER FLE W/LCK	000	CENTRAL WAREHOUSE	01/31/2010	2010	01	AVNET	SO	37
1001-HON-H252LK	HON 2 DRAWER LETTER FLE W/LCK	000	CENTRAL WAREHOUSE	02/28/2010	2010	01	AVNET	SO	23
1001-HON-H252LK	HON 2 DRAWER LETTER FLE W/LCK	000	CENTRAL WAREHOUSE	03/31/2010	2010	01	AVNET	SO	14
1001-HON-H252LK	HON 2 DRAWER LETTER FLE W/LCK	000	CENTRAL WAREHOUSE	04/30/2010	2010	01	AVNET	SO	25
Item Code : 1001-HON-H254 (1 Item)									
Customer Number : BRESLIN (4 Items)									
1001-HON-H254	HON 4 DRAWER LETTER FLE W/O LK	000	CENTRAL WAREHOUSE	01/31/2010	2010	01	BRESLIN	SO	70
1001-HON-H254	HON 4 DRAWER LETTER FLE W/O LK	000	CENTRAL WAREHOUSE	02/28/2010	2010	01	BRESLIN	SO	43
1001-HON-H254	HON 4 DRAWER LETTER FLE W/O LK	000	CENTRAL WAREHOUSE	03/31/2010	2010	01	BRESLIN	SO	27
1001-HON-H254	HON 4 DRAWER LETTER FLE W/O LK	000	CENTRAL WAREHOUSE	04/30/2010	2010	01	BRESLIN	SO	48

Item: Product Line (WFS8), Product Line Description (WORKSTATION FURN & ACCESS), Product Type (Finished Good), Valuation (FIFO), Price Code (STD), Procurement (Buy), Primary Vendor Div (01), Primary Vendor (CONT), Vendor Name (Container Corporation Of Usa), Weight (35)

Navigation Pane: Item, Item Vendors

Look For: Search In (All Columns) Find Next

Item Transactions

Item Code Description	Whse	Whse Description	Trans Date	Fiscal Year	AR Divisi	Customer Number	Type	QTY	Unit Price	Price
S2 (2 Items)										
F (8 Items)										
DN 2 DRAWER LETTER FLE W/O LK	000	CENTRAL WAREHOUSE	01/31/2010	2010	01	ABF	SO	35	77.884	2725.94
DN 2 DRAWER LETTER FLE W/O LK	000	CENTRAL WAREHOUSE	02/28/2010	2010	01	ABF	SO	21	78.883	1656.54
DN 2 DRAWER LETTER FLE W/O LK	000	CENTRAL WAREHOUSE	03/31/2010	2010	01	ABF	SO	13	72.585	943.6
DN 2 DRAWER LETTER FLE W/O LK	000	CENTRAL WAREHOUSE	04/30/2010	2010	01	ABF	SO	23	81.14	1866.22
DN 2 DRAWER LETTER FLE W/O LK	000	CENTRAL WAREHOUSE	04/30/2010	2010	01	ABF	SO	5	81.48	407.4
DN 2 DRAWER LETTER FLE W/O LK	001	EAST WAREHOUSE	05/14/2010	2010	01	ABF	SO	10	0	0
DN 2 DRAWER LETTER FLE W/O LK	001	EAST WAREHOUSE	05/15/2010	2010	01	ABF	SO	4	0	0
DN 2 DRAWER LETTER FLE W/O LK	098	SCRAP WAREHOUSE	05/01/2010	2010	01	ABF	SO	-1	81.48	-81.48
								110.00		7518.22
EALAR (1 Item)										
DN 2 DRAWER LETTER FLE W/O LK	001	EAST WAREHOUSE	05/31/2010	2010	02	GREALAR	SO	10	78.12	781.2
								10.00		781.20
								120.00		8299.42
S2LK (1 Item)										
NET (4 Items)										
DN 2 DRAWER LETTER FLE W/LCK	000	CENTRAL WAREHOUSE	01/31/2010	2010	01	AVNET	SO	37	82.532	3053.7
DN 2 DRAWER LETTER FLE W/LCK	000	CENTRAL WAREHOUSE	02/28/2010	2010	01	AVNET	SO	23	80.683	1855.71
DN 2 DRAWER LETTER FLE W/LCK	000	CENTRAL WAREHOUSE	03/31/2010	2010	01	AVNET	SO	14	75.504	1057.05
DN 2 DRAWER LETTER FLE W/LCK	000	CENTRAL WAREHOUSE	04/30/2010	2010	01	AVNET	SO	25	83.624	2090.61
								99.00		8057.07

Item: Product Line (WFS8), Product Line Description (WORKSTATION FURN & ACCESS), Product Type (Finished Good), Valuation (FIFO), Price Code (STD), Procurement (Buy), Primary Vendor Div (01), Primary Vendor (CONT), Vendor Name (Container Corporation Of Usa), Weight (35)

You can print the report, export to Excel, create graphs, etc. Save your setting for future use by clicking the Save icon. Save it in the Public folder or the Private folder.

